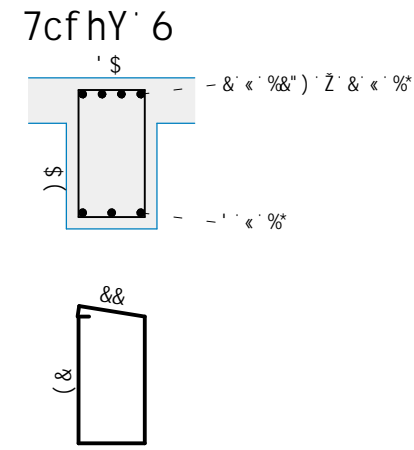


Technical drawing of a road cross-section showing a 12m wide road with a 2% cross-slope. The drawing includes a plan view at the top and a profile view at the bottom. The plan view shows the road layout with various curves and distances. The profile view shows the road's elevation, including the 1.65m high curb and the 2% cross-slope. The drawing is labeled with various dimensions and notes.



Jg%						
) \$5	%	%\$	&) - \$	%\$ \$	
) \$5	&	%\$	&) \$	+ \$5	
) \$5	'	%\$	&	%' \$	& \$	
* \$5	()	& +	+	% + %	

Jg'						
	\$5	%	%	&	-)	% \$
	\$5	&	%	&	-)	% \$
	*\$5))	+	&))

g)

...	\$5	%	...	%	&	+	\$...	%	\$
...	\$5	&	...	%	&	...	\$...	\$	\$
...	\$5	%	&	...)	...	+	\$

) \$5	&	%\$	&	(* \$	- &\$
	* \$5)		&+	+	% +%
Jg+						
) \$5	%	%\$	&	(*)	- * \$

.....)	\$5&%\$(.....%\$(&(%*
.....*	\$5')(*)%'*%%

i aY XY WbbfYhc XY J= 5G 9|C Uwg
 HU U XY fAuXU FU + * - 8% a'
 + * C (Z #a'
 Fygi ac XY U. c dcf Y YaYhc
 9#9A D9GC D9GC
 |Z |ZZ%\$
 J9%- & % & +
 Jg% % %
 Jg& % \$S
 Jg(% \$S
 Jg)) \$
 Jg* % %
 Jg- % %
 Jg+ ()

7cfhY' 5

99

5

88

x

8+ B(€ ') 71 +'


7cfhY' 5


99
- &' €' %\$
- &' €' %\$

x
&&

' * B' €') 71+*


7cfhY' 5






') B' €') 71+'

7cfhY' 5







8' B' 8' 71986

7cfhY' 5

7cfhY' 5

 - &' < %\$
- &' < %\$

 && x

&+ B' <') 71+^

7cfhY' 5

99
- & ' %\$
- & ' %\$

x
88

& R' € ' 71+*

7cfhY' 5

8)

5)

- &' e' 9

- (' e' 9

7cfhY' 6

8)

5

8

- 8' e'

- 8' e'

8)

5

8

- 8' e'

- 8' e'

[illegible]


MPMG
 Ministério Público
 do Estado de Minas Gerais


fábrica civil
 engenharia de projetos
www.fabricacivil.com.br

C6-94C SEDE DAS PROMOTORIAS DE JUSTIÇA DE IPATINGA-MG	
AV. DESPACHANTE RUI D'ALMA BARBOSA, Nº31 - CENTRO - IPATINGA/MG 7036F-9450W	
A=B-GHV F=C' Di 6@=7C' A=B5G' ; 9F5=G 7036A BC 5FA5UëC' 89' J'=; 5G' !' D5J% 5 HCF BC DFC-94C F<5Fë' 89' 5@A=85' 75F8CGC 9B_9B-G-94C T-J=J=J F0000G4' 9H' 9H-7C' F<5Fë' 89' 5@A=85' 75F8CGC 9B_9B-G-94C T-J=J=J 7037 89B50F BC DFC-94C 5BBF9 J" @5DF9; 5 5Fë !-H9C 9 I F65B-GH5 900765B %) \$ F<5Fë' 75F8CGC	
J9%# ' Jg%# Jg&'# Jg' Jg(' Jg)'# Jg&'# Jg+ / vs9 5GG-BSH F5 8-G7-Dm-B5 9HG 9L6D5 H-C-94C 9L97I H=J C 5GG-BSH F5 10K5 76B-C BC DFC-94C %\$) # \$&&'	048/108